

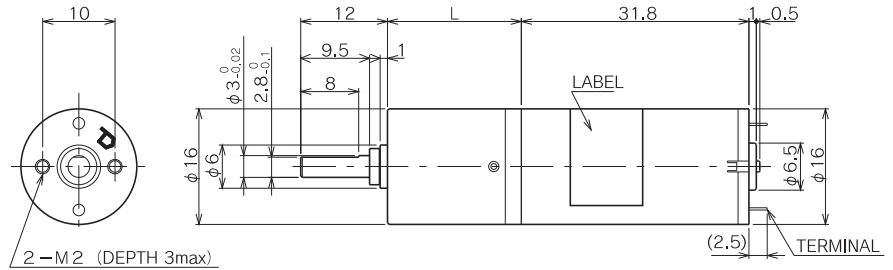
TG-87

(1.7W) $\phi 16$,
COMPACT DESIGN.

APPLICATION ATM / MONEY COUNTING MACHINE / CARD READER / PRINTER / SECURITY CAMERA / CASSETTE LOADING / MEDICAL EQUIPMENT etc.

GU

TG-87A
TG-87B



Allowable torque-speed characteristics GU

MODEL	GEAR RATIO	1	1	1	1	1	1	1	1	1	1	1	1	1	
		3.5	4.9	12.5	17.3	24.1	44	61.2	85.1	118	155	216	300	418	581
TG-87A-GU (12V)	SPEED (r/min)	3336	2352	939	697	485	267	189	136	97.3	74.4	53.2	38.8	28.2	20.9
	TORQUE (mN·m)	2.9	4.9	9.8	9.8	19.6	29.4	49	68.6	98	107.8	156.8	196	245	245
	TORQUE (kgf·cm)	0.03	0.05	0.1	0.1	0.2	0.3	0.5	0.7	1	1.1	1.6	2	2.5	2.5
TG-87B-GU (24V)	SPEED (r/min)	3336	2352	939	697	485	267	189	136	97.3	74.4	53.2	38.8	28.2	20.9
	TORQUE (mN·m)	2.9	4.9	9.8	9.8	19.6	29.4	49	68.6	98	107.8	156.8	196	245	245
	TORQUE (kgf·cm)	0.03	0.05	0.1	0.1	0.2	0.3	0.5	0.7	1	1.1	1.6	2	2.5	2.5

GU

GEAR RATIO	L (mm)	STAGE	TORQUE		WEIGHT (g)
			(mN·m)	(kgf·cm)	
1/3.5 ~ 1/4.9	15.1	1	49	0.5	18
1/12.5 ~ 1/24.1	18.5	2	98	1	21
1/44 ~ 1/118	22	3	147	1.5	24
1/155	25.5	4	147	1.5	28
1/216 ~ 1/581	25.5	4	245	2.5	28

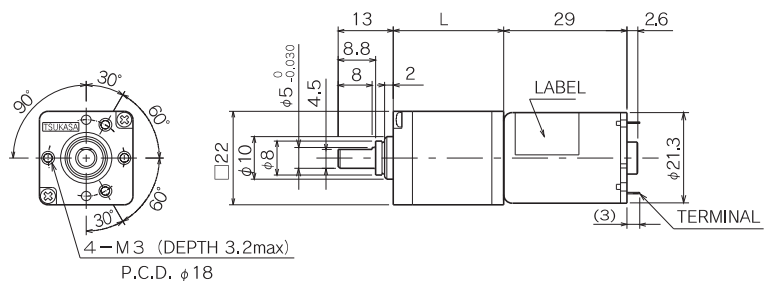
TG-01

(0.4 ~ 0.8W) $\phi 21.3$,
COMPACT DESIGN.

APPLICATION ATM / MONEY COUNTING MACHINE / CARD READER / PRINTER / BLINDS / SECURITY CAMERA / CASSETTE LOADING / FINISHER / MEDICAL EQUIPMENT etc.

EU

TG-01F
TG-01G
TG-01H



Allowable torque-speed characteristics EU

MODEL	GEAR RATIO	1	1	1	1	1	1	1	1	1	
		12.1	17.6	20.6	25.5	42.1	61.2	71.7	88.7	104	129
TG-01F-EU (24V)	SPEED (r/min)	316	225	194	149	94.1	62.6	53	43	36.7	29.5
	TORQUE (mN·m)	8.82	9.8	9.8	19.6	19.6	39.2	49	58.8	68.6	88.2
	TORQUE (kgf·cm)	0.09	0.1	0.1	0.2	0.2	0.4	0.5	0.6	0.7	0.9
TG-01G-EU (24V)	SPEED (r/min)	609	425	365	289	177	121	103	83	70.9	57.1
	TORQUE (mN·m)	8.82	8.82	9.8	19.6	19.6	39.2	49	58.8	68.6	88.2
	TORQUE (kgf·cm)	0.09	0.1	0.1	0.2	0.2	0.4	0.5	0.6	0.7	0.9
TG-01H-EU (12V)	SPEED (r/min)	600	420	361	285	175	119	101	81.8	69.9	56.3
	TORQUE (mN·m)	8.82	9.8	9.8	19.6	19.6	39.2	49	58.8	68.6	88.2
	TORQUE (kgf·cm)	0.09	0.1	0.1	0.2	0.2	0.4	0.5	0.6	0.7	0.9

EU

GEAR RATIO	L (mm)	STAGE	TORQUE		WEIGHT (g)
			(mN·m)	(kgf·cm)	
1/12.1 ~ 1/25.5	21	2	98	1	34
1/42.1 ~ 1/129	26	3	147	1.5	36