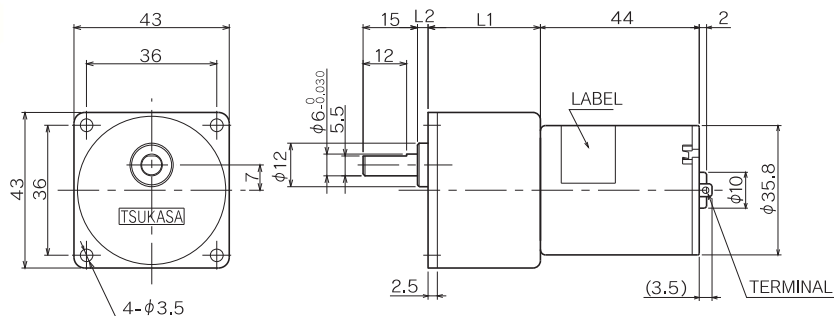




# AGD/AMD

TG-85B  
TG-85C  
TG-85E



## Allowable torque-speed characteristics AGD AMD

MODEL	GEAR RATIO	AGD																		AMD																	
		5	10	15	18	25	30	36	50	60	75	100	120	150	200	250	300	500	750	1000	1500																
TG-85B-AGD (12V)	SPEED (r/min)	913	448	295	247	179	154	125	92.4	78.9	64.6	49.6	38.9	32	24.6	20	16.8	10.3	6.9	5.2	3.5																
	TORQUE (mN·m)	39.2	88.2	127.4	147	196	196	245	294	294	294	294	588	588	588	588	588	588	588	588	588	588															
TG-85C-AGD (24V)	SPEED (r/min)	910	447	294	247	179	153	125	91.9	78.3	63.9	49	38.7	31.7	24.3	19.7	16.6	10.1	6.8	5.1	3.4																
	TORQUE (mN·m)	39.2	88.2	127.4	147	196	196	245	294	294	294	294	588	588	588	588	588	588	588	588	588	588															
TG-85E-AGD (24V)	SPEED (r/min)	1302	643	425	356	257	219	180	131	111	90.1	68.6	55	44.7	34.1	27.6	23.1	14	9.4	7.1	4.7																
	TORQUE (mN·m)	9.2	88.2	127.4	147	196	196	245	294	294	294	294	588	588	588	588	588	588	588	588	588	588															
TG-85B-AMD (12V)	SPEED (r/min)	913	448	295	247	179	148	124	90.2	74.2	60.6	45.1	38.7	31.8	24.3	19.8	16.7	10.2	—	—	—																
	TORQUE (mN·m)	39.2	88.2	127.4	147	196	245	294	343	441	490	686	686	686	686	686	686	686	—	—	—																
TG-85C-AMD (24V)	SPEED (r/min)	910	447	294	247	179	148	124	89.9	74.1	60.4	45	38.4	31.5	24	19.5	16.5	10.1	—	—	—																
	TORQUE (mN·m)	39.2	88.2	127.4	147	196	245	294	343	441	490	686	686	686	686	686	686	686	—	—	—																
TG-85E-AMD (24V)	SPEED (r/min)	1302	643	425	356	257	214	178	129	107	86.5	64.6	54.8	44.6	33.8	27.4	23	14	—	—	—																
	TORQUE (mN·m)	39.2	88.2	127.4	147	196	245	294	343	441	490	686	686	686	686	686	686	686	—	—	—																

### AGD

GEAR RATIO	L1 (mm)	L2 (mm)	STAGE	TORQUE		WEIGHT (g)
				(mN·m)	(kgf·cm)	
1/5 ~ 1/10	26	0.5	2	98	1	90
1/12.5 ~ 1/30	26	3	3	196	2	95
1/36 ~ 1/100	26	5.5	4	294	3	100
1/120 ~ 1/300	31	3	5	588	6	105
1/360 ~ 1/1000	31	5.5	6	588	6	110
1/1500 ~ 1/3000	31	8	7	588	6	115

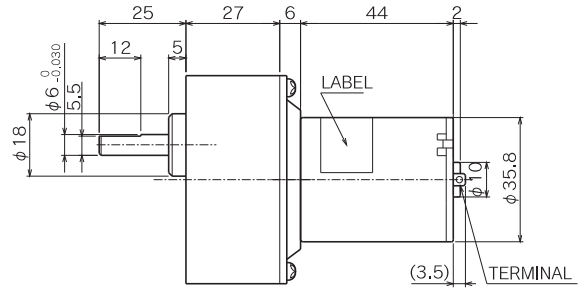
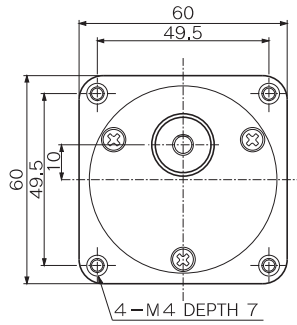
### AMD

GEAR RATIO	L1 (mm)	L2 (mm)	STAGE	TORQUE		WEIGHT (g)
				(mN·m)	(kgf·cm)	
1/5 ~ 1/10	26	4	2	98	1	110
1/12.5 ~ 1/18	26	6.5	3	343	3.5	115
1/25 ~ 1/36	26	6.5	3	392	4	115
1/50 ~ 1/75	31	4	4	490	5	115
1/90 ~ 1/150	31	4	4	686	7	115
1/180 ~ 1/500	31	6.5	5	686	7	120



# BE

TG-85B  
TG-85C  
TG-85E



## Allowable torque-speed characteristics

BE

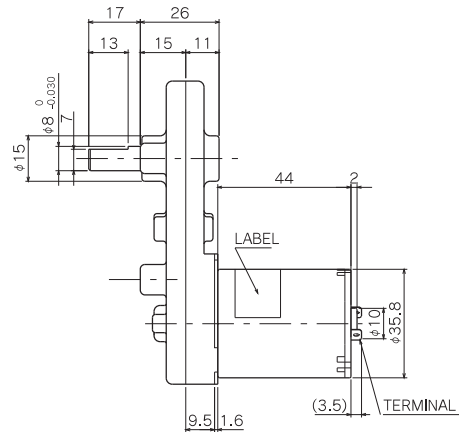
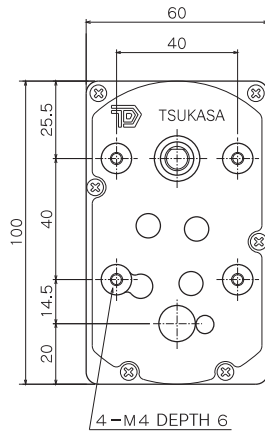
MODEL	GEAR RATIO	TORQUE (mN·m)															
		5	10	12.5	15	18	25	30	50	75	100	150	200	300	500	750	1000
TG-85B-BE (12V)	SPEED (r/min)	926	448	354	295	247	185	148	89.7	59.6	44.5	30.3	23.7	16.1	10	6.8	5.1
	TORQUE (kgf·cm)	0.4	0.9	1.2	1.3	1.5	2	2.5	4	5.5	7.5	10	10	10	10	10	10
TG-85C-BE (24V)	SPEED (r/min)	922	447	354	294	247	185	148	89.5	59.5	44.5	30.2	23.5	16	9.9	6.7	5
	TORQUE (kgf·cm)	0.4	0.9	1.2	1.3	1.5	2	2.5	4	5.5	7.5	10	10	10	10	10	10
TG-85E-BE (24V)	SPEED (r/min)	1321	643	510	425	356	267	214	129	85.6	64.1	43.3	33.3	22.4	13.8	9.3	7
	TORQUE (kgf·cm)	0.4	0.9	1.2	1.3	1.5	2	2.5	4	5.5	7.5	10	10	10	10	10	10

BE

GEAR RATIO	STAGE	TORQUE		WEIGHT (g)
		(mN·m)	(kgf·cm)	
1/3 ~ 1/12.5	2	980	10	255
1/15 ~ 1/60	3	980	10	270
1/75 ~ 1/250	4	980	10	285
1/300 ~ 1/1000	5	980	10	300

# BG

TG-85B  
TG-85C  
TG-85E



## Allowable torque-speed characteristics

BG

MODEL	GEAR RATIO	TORQUE (mN·m)									
		12.5	25	36	60	100	150	200	300	500	700
TG-85B-BG (12V)	SPEED (r/min)	359	179	124	74.2	44.4	29.5	22.7	16.4	9.7	7.1
	TORQUE (kgf·cm)	1	2	3	5	8.5	13	15	10	20	20
TG-85C-BG (24V)	SPEED (r/min)	358	179	124	74.1	44.3	29.4	22.6	16.2	9.6	7
	TORQUE (kgf·cm)	1	2	3	5	8.5	13	15	10	20	20
TG-85E-BG (24V)	SPEED (r/min)	515	257	178	107	63.9	42.5	32.4	22.7	13.5	9.8
	TORQUE (kgf·cm)	1	2	3	5	8.5	13	15	10	20	20

BG

GEAR RATIO	STAGE	TORQUE		WEIGHT (g)
		(mN·m)	(kgf·cm)	
1/12.5 ~ 1/18	3	686	7	315
1/25 ~ 1/90	3	980	10	315
1/100 ~ 1/200	3	1470	15	315
1/250, 1/500, 1/700	4	1960	20	315
1/300	4	980	10	285