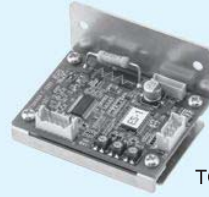


TG-611

(3.5W) 22-SQUARE, COMPACT INNER ROTOR TYPE BRUSHLESS MOTOR.

Motor Driver Circuit for TG-611

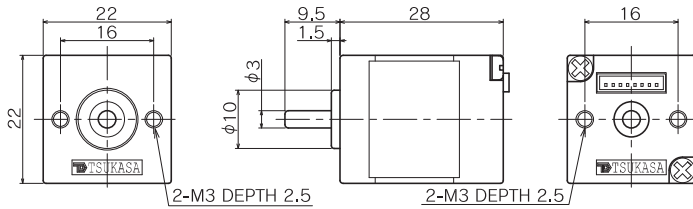


TCP-S27A-611B

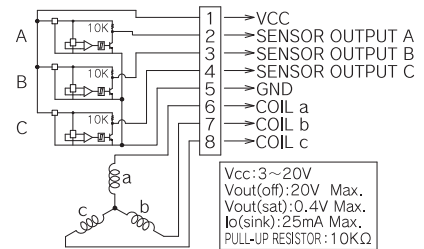
Single motor specification

TYPE	RATED VOLTAGE (V)	NO-LOAD SPEED (r/min)	NO-LOAD CURRENT (mA)	TORQUE		RATED SPEED (r/min)	RATED CURRENT (mA)	DIRECTION OF ROTATION	WEIGHT (g)
				(mN · m)	(gf · cm)				
TG-611B	24	7260	80	5.88	60	5700	280	BOTH DIRECTIONS	61

Single motor outline

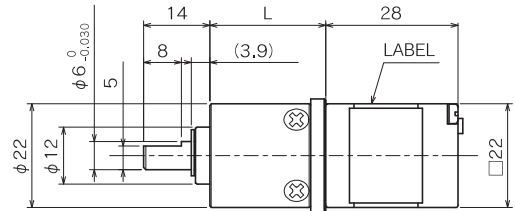
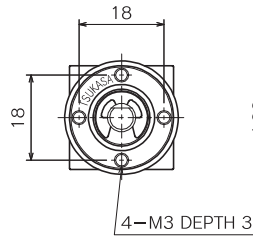


Motor Internal Connection Diagram



FU

TG-611B



Allowable torque-speed characteristics

FU

MODEL	GEAR RATIO	1	1	1	1
		4	16	64	256
TG-611B-FU (24V)	SPEED (r/min)	1380	345	90.8	25.5
	TORQUE (mN·m)	19.6	68.6	196	294
	TORQUE (kgf·cm)	0.2	0.7	2	3

FU

GEAR RATIO	L (mm)	STAGE	TORQUE		WEIGHT (g)
			(mN·m)	(kgf·cm)	
1/4	19.5	1	49	0.5	41
1/16	24.5	2	98	1	49
1/64	29.5	3	196	2	57
1/256	34.5	4	294	3	66