

TG-609

φ42 HIGH POWER BRUSHLESS MOTOR.

Motor Driver Circuit for TG-609



TCP-S27A-609

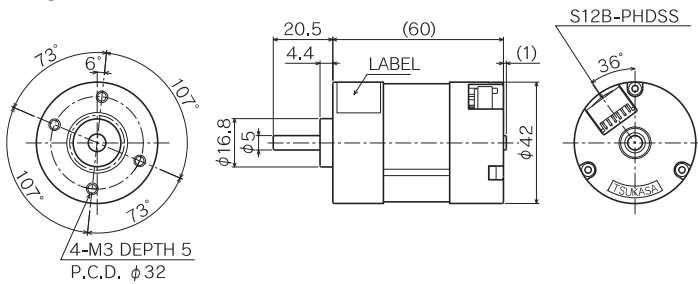
APPLICATION LASER PRINTER / COPIER / SORTER / TICKET-VENDING MACHINE / BUS FARE BOX / ATM / GAMING MACHINE / SECURITY CAMERA / BILL BINDING MACHINE / MONEY COUNTING MACHINE / VENDING MACHINE / PRINTING PRESS etc.

Single motor specification

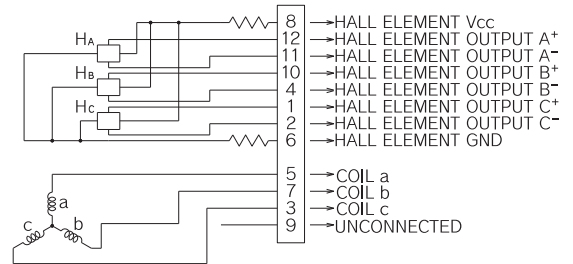
TYPE	RATED VOLTAGE (V)	NO-LOAD SPEED (r/min)	NO-LOAD CURRENT (mA)	TORQUE		RATED SPEED (r/min)	RATED CURRENT (mA)	DIRECTION OF ROTATION	WEIGHT (g)
				(mN · m)	(gf · cm)				
TG-609A	24	3910	230	78.4	800	2870	1425	BOTH DIRECTIONS	300
TG-609B	24	3950	300	78.4	800	3270	1475	BOTH DIRECTIONS	300
TG-609C	24	3950	300	78	800	3270	1475	BOTH DIRECTIONS	300

*TG-609C is only for BM gear.

Single motor outline

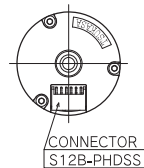
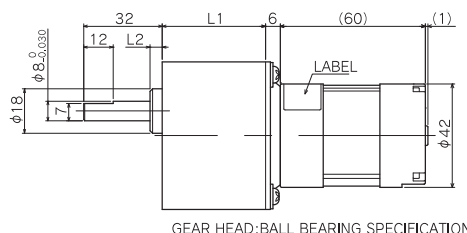
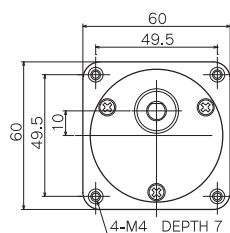


Motor Internal Connection Diagram



BM

TG-609C



Allowable torque-speed characteristics

BM

MODEL	GEAR RATIO	TORQUE							
		5	10	18	30	50	100	180	
TG-609C-BM (24V)	SPEED (r/min)	651	325	180	107	66	35.5	22	
	TORQUE (mN·m)	294	588	980	1666	2450	2450	2450	
	TORQUE (kgf·cm)	3	6	10	17	25	25	25	

BM

GEAR RATIO	L1 (mm)	L2 (mm)	STAGE	TORQUE		WEIGHT (g)
				(mN·m)	(kgf·cm)	
1/5	32	3	2	0.29	3	230
1/10				0.98	10	
1/18				1.47	15	
1/30	42	5	3	1.96	20	320
1/50				2.45	25	
1/100				2.45	25	
1/180				2.45	25	