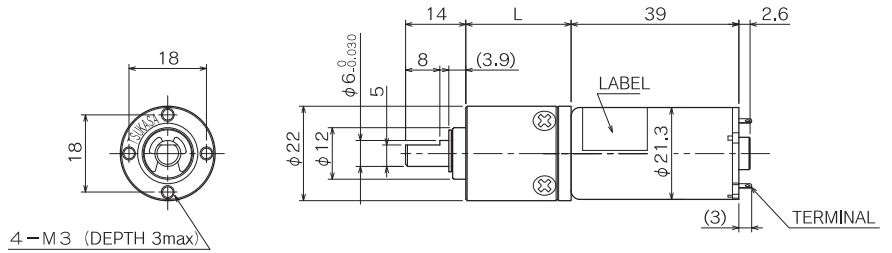


# FU

TG-201A  
TG-201B



## Allowable torque-speed characteristics

FU

MODEL	GEAR RATIO	1													
		4	4.7	16	19	23	64	76	90	107	256	304	361	429	509
TG-201A-FU (24V)	SPEED (r/min)	1072	895	265	230	190	66.9	56.2	46.9	39.4	17.2	14.8	12.7	10.8	9.2
	TORQUE (mN·m)	7.84	9.8	29.4	29.4	39.2	98	117.6	147	176.4	294	294	294	294	294
TG-201B-FU (24V)	TORQUE (kgf·cm)	0.08	0.1	0.3	0.3	0.4	1	1.2	1.5	1.8	3	3	3	3	3
	SPEED (r/min)	1581	1362	404	335	280	98.1	83	69.8	59.3	25.8	22.1	18.8	16	13.6
	TORQUE (mN·m)	9.8	9.8	29.4	39.2	49	127.4	147	176.4	196	294	294	294	294	294
	TORQUE (kgf·cm)	0.1	0.1	0.3	0.4	0.5	1.3	1.5	1.8	2	3	3	3	3	3

FU

GEAR RATIO	L (mm)	STAGE	TORQUE		WEIGHT (g)
			(mN·m)	(kgf·cm)	
1/4 ~ 1/4.7	19.5	1	49	0.5	41
1/16 ~ 1/23	24.5	2	98	1	49
1/64 ~ 1/107	29.5	3	196	2	57
1/256 ~ 1/509	34.5	4	294	3	66

# TG-47

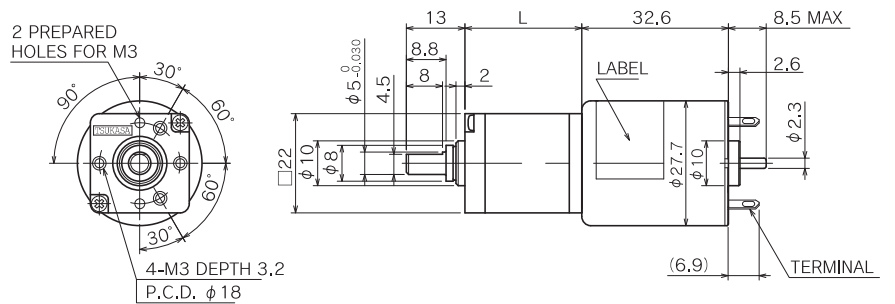
(0.9 ~ 3.6W) 5-SLOT, BESTSELLER, ENCODER CAN BE MOUNTED.

## APPLICATION

ATM / MONEY COUNTING MACHINE / CARD READER / PRINTER / BLINDS / SECURITY CAMERA / CASSETTE LOADING / MEDICAL EQUIPMENT etc.

# EU

TG-47E  
TG-47F  
TG-47G



## Allowable torque-speed characteristics

EU

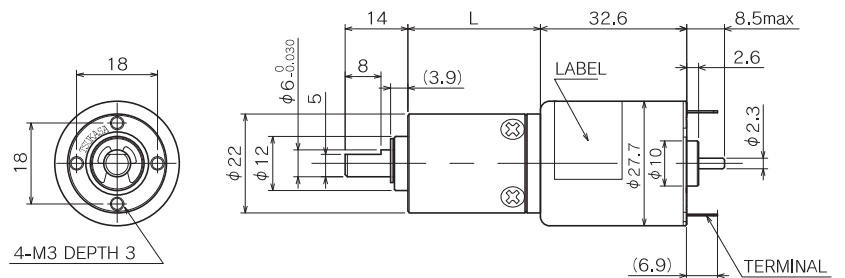
MODEL	GEAR RATIO	1										
		12.1	17.6	20.6	25.5	42.1	61.2	71.7	88.7	104	129	
TG-47E-EU (24V)	SPEED (r/min)	380	256	212	170	105	71.4	60.4	49	41.9	34.4	
	TORQUE (mN·m)	9.8	19.6	29.4	39.2	49	78.4	98	117.6	137.2	147	
TG-47F-EU (24V)	TORQUE (kgf·cm)	0.1	0.2	0.3	0.4	0.5	0.8	1	1.2	1.4	1.5	
	SPEED (r/min)	569	376	328	258	158	108	91.6	76.3	66.4	54.7	
TG-47G-EU (12V)	TORQUE (mN·m)	19.6	39.2	39.2	58.8	78.4	117.6	147	147	147	147	
	TORQUE (kgf·cm)	0.2	0.4	0.4	0.6	0.8	1.2	1.5	1.5	1.5	1.5	
TG-47G-EU (12V)	SPEED (r/min)	382	257	214	171	105	71.8	60.8	49.3	42.1	34.6	
	TORQUE (mN·m)	9.8	19.6	29.4	39.2	49	78.4	98	117.6	137.2	147	
	TORQUE (kgf·cm)	0.1	0.2	0.3	0.4	0.5	0.8	1	1.2	1.4	1.5	

EU

GEAR RATIO	L (mm)	STAGE	TORQUE		WEIGHT (g)
			(mN·m)	(kgf·cm)	
1/12.1 ~ 1/25.5	21	2	98	1	34
1/42.1 ~ 1/129	26	3	147	1.5	36

# FU

TG-47E  
TG-47F  
TG-47G



## Allowable torque-speed characteristics

FU

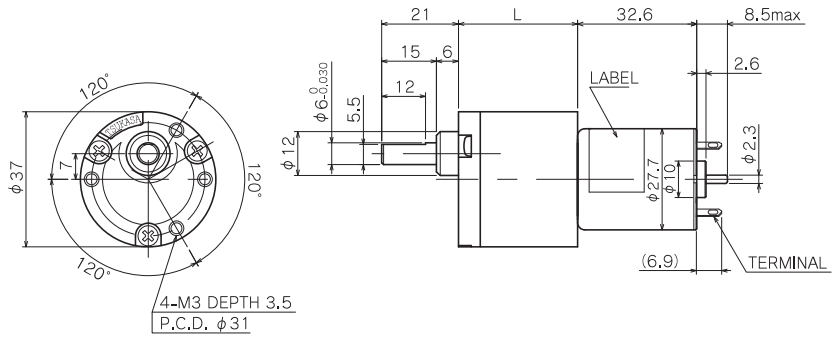
MODEL	GEAR RATIO	1													
		4	4.7	16	19	23	64	76	90	107	256	304	361	429	509
TG-47E-FU (24V)	SPEED (r/min)	1084	917	278	238	196	68.4	57.3	48.2	40.6	17	14.6	12.5	10.7	9.1
	TORQUE (mN·m)	6.86	7.84	19.6	19.6	29.4	78.4	98	117.6	137.2	294	294	294	294	294
TG-47F-FU (24V)	TORQUE (kgf·cm)	0.07	0.08	0.2	0.2	0.3	0.8	1	1.2	1.4	3	3	3	3	3
	SPEED (r/min)	1656	1429	424	351	293	103	86.9	73	62.2	27.1	23.2	19.8	16.9	14.4
TG-47G-FU (24V)	TORQUE (mN·m)	9.8	9.8	29.4	39.2	49	127.4	147	176.4	196	294	294	294	294	294
	TORQUE (kgf·cm)	0.1	0.1	0.3	0.4	0.5	1.3	1.5	1.8	2	3	3	3	3	3
TG-47G-FU (24V)	SPEED (r/min)	2267	1937	559	468	394	137	115	99.1	84.9	36.5	31	26.3	22.3	18.9
	TORQUE (mN·m)	9.8	9.8	39.2	49	58.8	166.6	196	196	196	294	294	294	294	294
TG-47G-FU (12V)	TORQUE (kgf·cm)	0.1	0.1	0.4	0.5	0.6	1.7	2	2	2	3	3	3	3	3
	SPEED (r/min)	1091	923	280	239	197	68.9	57.6	48.5	40.9	17.1	14.7	12.6	10.7	9.1
	TORQUE (mN·m)	6.86	7.84	19.6	19.6	29.4	78.4	98	117.6	137.2	294	294	294	294	294
	TORQUE (kgf·cm)	0.07	0.08	0.2	0.2	0.3	0.8	1	1.2	1.4	3	3	3	3	3

FU

GEAR RATIO	L (mm)	STAGE	TORQUE		WEIGHT (g)
			(mN·m)	(kgf·cm)	
1/4 ~ 1/4.7	19.5	1	49	0.5	41
1/16 ~ 1/23	24.5	2	98	1	49
1/64 ~ 1/107	29.5	3	196	2	57
1/256 ~ 1/509	34.5	4	294	3	66

# LG

TG-47E  
TG-47F  
TG-47G



## Allowable torque-speed characteristics

LG

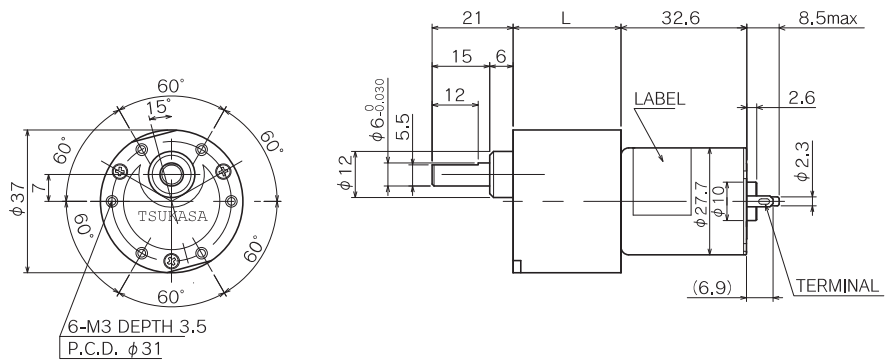
MODEL	GEAR RATIO	TORQUE (kgf·cm)															
		1/6	1/9	1/13	1/16	1/20	1/29	1/36	1/44	1/66	1/80	1/100	1/148	1/181	1/224		
TG-47E-LG (24V)	SPEED (r/min)	753	516	355	278	229	152	124	99.8	66.7	54.3	43.9	29.4	24	19.8		
	TORQUE (mN·m)	8.82	9.8	9.8	19.6	19.6	29.4	39.2	49	68.6	88.2	107.8	147	186.2	196		
	TORQUE (kgf·cm)	0.09	0.1	0.1	0.2	0.2	0.3	0.4	0.5	0.7	0.9	1.1	1.5	1.9	2		
TG-47F-LG (24V)	SPEED (r/min)	1191	759	730	423	338	229	184	150	101	82	66.4	45.4	37.2	30.1		
	TORQUE (mN·m)	9.8	19.6	19.6	29.4	39.2	49	68.6	78.4	107.8	137.2	166.6	196	245	294		
	TORQUE (kgf·cm)	0.1	0.2	0.2	0.3	0.4	0.5	0.7	0.8	1.1	1.4	1.7	2	2.5	3		
TG-47G-LG (24V)	SPEED (r/min)	1605	1038	690	560	451	302	246	199	133	109	89.4	59.2	49.7	40.9		
	TORQUE (mN·m)	9.8	19.6	29.4	39.2	49	68.6	88.2	107.8	147	176.4	196	294	294	294		
	TORQUE (kgf·cm)	0.1	0.2	0.3	0.4	0.5	0.7	0.9	1.1	1.5	1.8	2	3	3	3		
TG-47G-LG (12V)	SPEED (r/min)	758	518	356	280	231	153	125	100	67.1	54.7	44.2	29.6	24.2	19.9		
	TORQUE (mN·m)	8.82	9.8	9.8	19.6	19.6	29.4	39.2	49	68.6	88.2	107.8	147	186.2	196		
	TORQUE (kgf·cm)	0.09	0.1	0.1	0.2	0.2	0.3	0.4	0.5	0.7	0.9	1.1	1.5	1.9	2		

LG

GEAR RATIO	L (mm)	STAGE	TORQUE		WEIGHT (g)
			(mN·m)	(kgf·cm)	
1/6, 1/9	25.7	2	49	0.5	69
1/13, 1/16, 1/20	25.7	3	98	1	73
1/29	29.2	4	98	1	77
1/36, 1/44	29.2	4	196	2	77
1/66, 1/80, 1/100	32.6	5	294	3	81
1/148, 1/181, 1/224	36.1	6	294	3	85

# SG/SM

TG-47E  
TG-47F  
TG-47G



## Allowable torque-speed characteristics

SG SM

MODEL	GEAR RATIO	TORQUE (kgf·cm)																			
		1/5	1/10	1/15	1/18	1/25	1/30	1/36	1/50	1/60	1/75	1/100	1/120	1/150	1/200	1/250	1/300	1/500	1/750	1/1000	1/1500
TG-47E-SG (24V)	SPEED (r/min)	868	456	292	249	177	146	123	87.6	73.3	58.4	43.4	36.2	29	22.1	17.7	14.5	8.7	6	4.6	3.1
	TORQUE (mN·m)	7.84	9.8	19.6	19.6	29.4	39.2	39.2	58.8	68.6	88.2	127.4	137.2	166.6	196	245	343	490	588	588	588
	TORQUE (kgf·cm)	0.08	0.1	0.2	0.2	0.3	0.4	0.4	0.6	0.7	0.9	1.3	1.4	1.7	2	2.5	3.5	5	6	6	6
TG-47F-SG (24V)	SPEED (r/min)	1352	676	444	379	266	222	183	133	111	88	66	55.3	44.2	32.9	26.7	22.1	13.7	9.5	7.3	4.9
	TORQUE (mN·m)	9.8	19.6	29.4	29.4	49	58.8	68.6	88.2	107.8	137.2	186.2	196	245	343	392	490	588	588	588	588
	TORQUE (kgf·cm)	0.1	0.2	0.3	0.3	0.5	0.6	0.7	0.9	1.1	1.4	1.9	2	2.5	3.5	4	5	6	6	6	6
TG-47G-SG (24V)	SPEED (r/min)	1836	881	588	488	351	294	244	175	146	117	87.8	73.9	58.2	43.9	35.2	29.7	18.5	12.6	9.6	6.4
	TORQUE (mN·m)	9.8	29.4	39.2	49	68.6	78.4	88.2	127.4	147	186.2	245	245	343	441	539	588	588	588	588	588
	TORQUE (kgf·cm)	0.1	0.3	0.4	0.5	0.7	0.8	0.9	1.3	1.5	1.9	2.5	2.5	3.5	4.5	5.5	6	6	6	6	6
TG-47G-SG (12V)	SPEED (r/min)	874	458	294	250	179	147	124	88.2	73.7	58.8	43.7	36.4	29.2	22.2	17.8	14.6	8.8	6	4.6	3.1
	TORQUE (mN·m)	7.84	9.8	19.6	19.6	29.4	39.2	39.2	58.8	68.6	88.2	127.4	137.2	166.6	196	245	343	490	588	588	588
	TORQUE (kgf·cm)	0.08	0.1	0.2	0.2	0.3	0.4	0.4	0.6	0.7	0.9	1.3	1.4	1.7	2	2.5	3.5	5	6	6	6
TG-47E-SM (24V)	SPEED (r/min)	868	456	292	249	177	146	123	87.6	73.3	58.4	43.4	36.2	29	22.1	17.7	14.5	8.7	6	4.6	—
	TORQUE (mN·m)	7.84	9.8	19.6	19.6	29.4	39.2	39.2	58.8	68.6	88.2	127.4	137.2	166.6	196	245	343	490	588	588	—
	TORQUE (kgf·cm)	0.08	0.1	0.2	0.2	0.3	0.4	0.4	0.6	0.7	0.9	1.3	1.4	1.7	2	2.5	3.5	5	6	6	—
TG-47F-SM (24V)	SPEED (r/min)	1352	676	444	379	266	222	183	133	111	88	66	55.3	44.2	32.9	26.7	22.1	13.7	9.5	7.3	—
	TORQUE (mN·m)	9.8	19.6	29.4	29.4	49	58.8	68.6	88.2	107.8	137.2	186.2	196	245	343	392	490	588	588	588	—
	TORQUE (kgf·cm)	0.1	0.2	0.3	0.3	0.5	0.6	0.7	0.9	1.1	1.4	1.9	2	2.5	3.5	4	5	6	6	6	—
TG-47G-SM (24V)	SPEED (r/min)	1836	881	588	488	351	294	244	175	146	117	87.8	73.9	58.2	43.9	35.2	29.7	18.5	12.6	9.6	—
	TORQUE (mN·m)	9.8	29.4	39.2	49	68.6	78.4	88.2	127.4	147	186.2	245	245	343	441	539	588	588	588	588	—
	TORQUE (kgf·cm)	0.1	0.3	0.4	0.5	0.7	0.8	0.9	1.3	1.5	1.9	2.5	2.5	3.5	4.5	5.5	6	6	6	6	—
TG-47G-SM (12V)	SPEED (r/min)	874	458	294	250	179	147	124	88.2	73.7	58.8	43.7	36.4	29.2	22.2	17.8	14.6	8.8	6	4.6	—
	TORQUE (mN·m)	7.84	9.8	19.6	19.6	29.4	39.2	39.2	58.8	68.6	88.2	127.4	137.2	166.6	196	245	343	490	588	588	—
	TORQUE (kgf·cm)	0.08	0.1	0.2	0.2	0.3	0.4	0.4	0.6	0.7	0.9	1.3	1.4	1.7	2	2.5	3.5	5	6	6	—

SG

GEAR RATIO	L (mm)	STAGE	TORQUE		WEIGHT (g)
			(mN·m)	(kgf·cm)	
1/5 ~ 1/10	20.5	2	98	1	100
1/12.5 ~ 1/30	23	3	196	2	105
1/36 ~ 1/100	25.5	4	294	3	110
1/120 ~ 1/300	28	5	588	6	115
1/360 ~ 1/1000	30.5	6	588	6	120
1/1500 ~ 1/3000	33	7	588	6	125

SM

GEAR RATIO	L (mm)	STAGE	TORQUE		WEIGHT (g)
			(mN·m)	(kgf·cm)	
1/5 ~ 1/10	23	2	98	1	100
1/12.5 ~ 1/30	25.5	3	196	2	105
1/36 ~ 1/100	28	4	294	3	110
1/120 ~ 1/300	30.5	5	588	6	115
1/360 ~ 1/1000	33	6	588	6	120

